

1thousanddays

For children aged 2- 3 1/2



Flat shapes

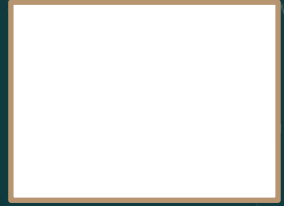


Square

A shape with four equal straight sides and four right angles.

Rectangle

A shape with four sides and four corners. All opposite sides are parallel and of equal length



Circle

A round shape, with no angles, in which all points on the edge of the circle are at the same distance from the centre.



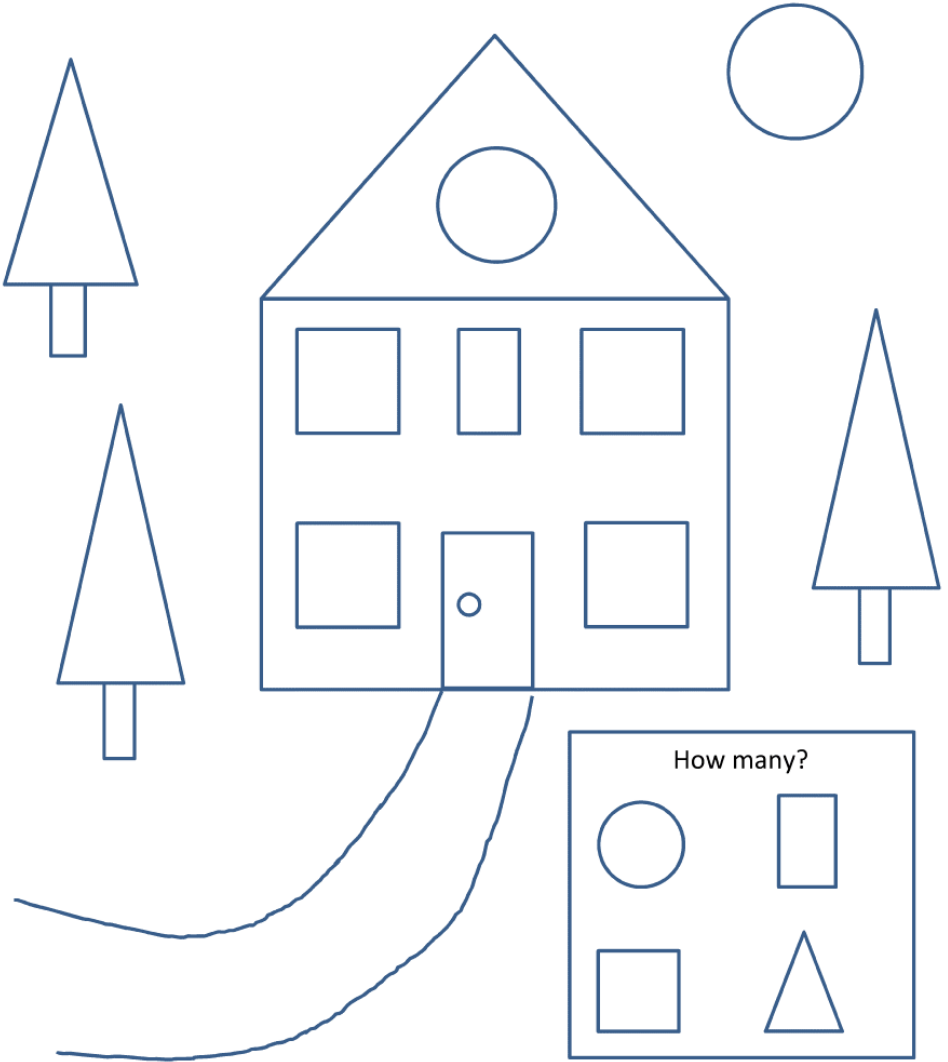
Triangle

A shape with three sides and three angles.



WHOA!

Which shapes do you see in the below image?



Activities



1. Draw a square and cut it in half along its sides, which shape do you get? Now cut in half along its angles, which shape do you get now?
2. Cut a circle in half, what shape do you get?
3. Look around you, can you see any of the above shapes around you?
4. Combine all the shapes you have learnt to create different objects. Get creative!

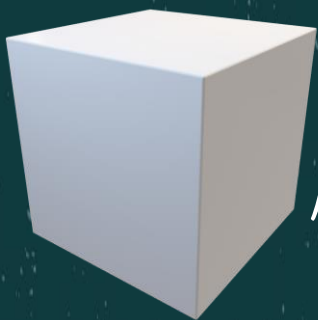


1thousandays

For children aged 3-5



Solids



Cube

A three-dimensional solid with six square equal sides

Sphere

A solid in which each point on its surface is equidistant from its centre



Cone

A shape with a circular base and smooth curved sides ending in a point at the top



WHOA!

Where can we find cubes, spheres and cones?



Dice are cubes. How many sides do they have? Roll one and try to score six, good luck!

Balls are spheres. Which game is this ball used in?



Guess what? Ice cream cones are...cones!



Activities

1. Cut out 6 equal squares on card paper and tape them together to create a cube.
2. Planets look like spheres. Can you name any planet?
3. Chose one sphere-shaped and one cube-shaped object in your house and roll them at the same time. Which rolls the furthest? Why?
4. Look around you, can you see other cone-shaped objects?
5. Combine the three solids together into different combinations. Get creative!





Learning with



| 1thousandays

SHAPES IN ANCIENT ROME

For children aged 4 ½ -6



Ancient Romans

The Roman Empire developed around the city of Rome, in Italy. It existed for over 1,200 years and occupied a HUGE territory, including Europe, North Africa and Western Asia.



Did you know most of us use the Latin alphabet, derived from Roman times? Can you name any other alphabet?



The Romans also perfected architecture...



WHOA!



The Colosseum was built over 1,940 years ago under the Emperor Vespasianus

The Pyramid of Cestius was built as a tomb



Aqueducts were a complex system of arches used to bring water to cities and fields.



Activities



1. Can you identify any solids or flat shapes in the above images?
2. What else do you know about ancient Romans? Do you know of any other ancient civilisation?
3. Are there pyramids anywhere else in the world? Where?
4. Draw multiple semi-circles and combine them together to create a set of arches or circles.
5. Consider using the Montessori Roman Arch to develop your child's hand-eye, spatial discrimination, and interest in architecture.





Learning with



| 1thousanddays

SHAPES IN EUROPE

For children aged 4 ½ -6



Europe

Planet Earth has seven continents. Europe is one of them. The others are Asia, North America, South America, Africa, Antarctica, and Australasia.

There are 50 countries within the European territory.

Do you live in Europe?



Some of Europe's countries are often identified with famous buildings, here are a few:



The Colosseum

The Eiffel Tower



The Big Ben

The Brandenburg Gate



Activities



1. Can you identify any shapes or solids in the above images?
2. In which countries are those monuments?
3. Can you name any other countries in Europe?
4. Can you name any cities in Europe?
5. Which monuments or landmarks do you know in your city or country?
6. If you haven't before, consider using the Montessori Roman Arch activity to build part of the Colosseum.

don't be afraid to repeat activities more than once...practice makes us better!

